

**LËTZ
PREPARE!**
STRATÉGIE NATIONALE DE RÉSILIENCE

NATIONAL RESILIENCE STRATEGY

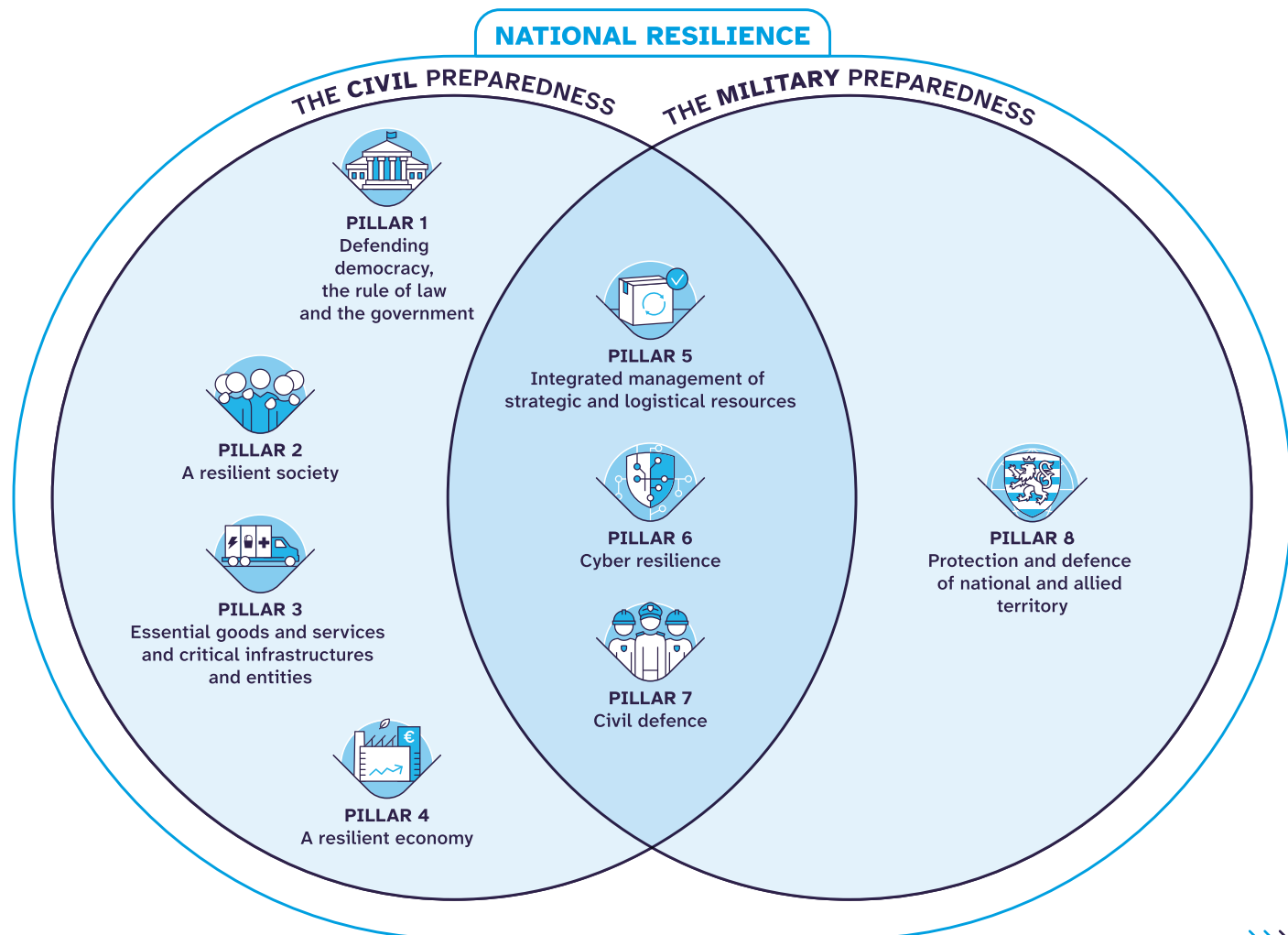
**Together, for a
strong and resilient society.**

Natural disasters, cyberattacks, pandemics and armed conflicts on Europe's borders launched by hostile actors: crises are complex, evolving, interconnected and multiple, and can arise at any time. They also pose a risk to Luxembourg's national security, vital interests and essential needs.

To meet these challenges, our country must be able to act quickly and be resilient. In other words, we must be able to anticipate risks, respond to and adapt to disruptive events, and also recover quickly. It is important to protect the population and guarantee essential needs, limit the negative impacts and maintain social, economic and political stability.

The capacity of the state and society to prepare for any event that could harm the vital interests or essential needs of the country or its population is reflected in Luxembourg through the National Resilience Strategy. This Strategy is based on a whole-of-government approach involving all relevant actors across all levels of government, both local and national, and the public authorities, but also a whole-of-society approach involving all stakeholders in society. Indeed, every individual can play a role in preparing our country.

The National Resilience Strategy is based on two blocks – civil preparedness and military preparedness – and eight pillars proposing concrete actions to be implemented by public institutions and authorities and civil society.



Objectives

The National Resilience Strategy pursues the following objectives:

1. Ensuring the functioning of the state and the protection of democracy and the rule of law;
2. Open and harmonise different approaches to promote collaboration between civil, public and private stakeholders;
3. Strengthen cooperation between military and civilian actors, as well as public-private partnerships;
4. Ensure the vital functions of society;
5. Promote a culture of preparedness and individual and collective resilience;
6. Increase the resilience and competitiveness of the Luxembourg economy;
7. Strengthen Luxembourg's cyber resilience capabilities;
8. Ensure closer coordination with allies and European and international organisations.

Principles

The National Resilience Strategy is based on three principles:

1. An integrated all-hazards approach, covering human, natural and technological risks;
2. A whole-of-government approach that brings together all relevant actors across all levels of government, both local and national;
3. A whole-of-society approach involving all stakeholders in society.

